

Flashtransfer choice

Multi format film transfer system

Hardware:

- Standard film formats: N8; S8; 9,5mm (Pathé); 16mm (incl. S16)
- Exchangeable sound heads com opt, com mag N8/S8/16
- Pan and zoom adjustments, manual
- Picture framing, manual
- Variable tension, manual
- Flashing LED light source with adjustable color
- Optical scratch concealment
- Image sensor: IT-CCD 2336 x 1752 or 4096 x 3072 visible pixel
- Scanning speed: 5fps - 25fps
- Max preview speed (with stable picture): 300fps(16mm) 600fps (8mm)
- Continuous motion capstan drive system
- Laser registered film transport
- Sprocket- free film path
- Motor driven focusing
- Shrinkage < 1% dynamically
- Low power consumption (75 W)
- Dimensions (LxWxH) 422 x 660 x 800 [mm]
16.65 x 25.99 x 31.50 [Inch]

Optional:

- PTRs
- Film formats: 17,5 mm; 28mm
- Frame accurate auto light
- Shrinkage < 4% dynamically
- real time monitoring

Workstation:

- Eight Core workstation, (other core numbers on request)
- 12 GByte RAM
- nVidia GTX 580 graphic card
- 12 TB internal hard disk storage (stripe set 6x 2TB hard disk)
(other storage size on request)
- Machine Interface Card

Software AgiScan3

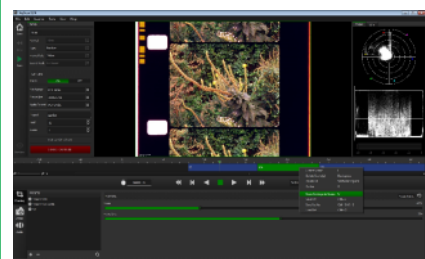
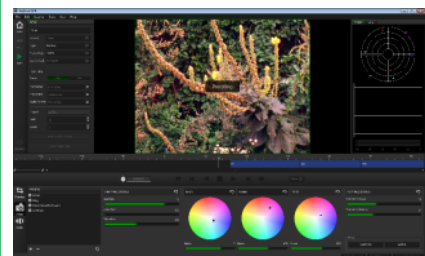
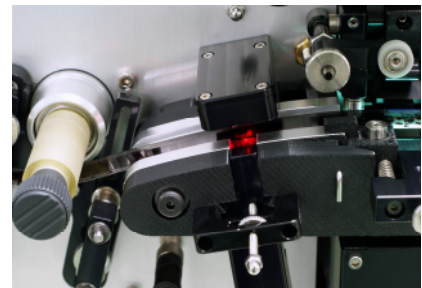
- Image preview / post-processing preview
- Film optimized image processing
- Mirroring
- Primary color correction (Black / Gamma / Light)
- Negative / black & white
- Saturation
- Sharpening filter
- Anamorphic correction
- Cropping, masking, resizing
- Automatic sensor calibration
- SDI image output (SD, HD, 2K)
- Luminance and RGB histogram
- Waveform monitor and vector scope with line selector
- Focus finder / autofocus
- Audio equalizer and routing
- Support for AVID® Artist Color control surface
- Compressed and uncompressed file formats
 - YUV422 8/10 bit ^{1,2}
 - DPX RGB 10/12 bit ³
 - TIFF ³
 - MJPEG 8 bit ^{1,2}

¹: AVI containers on Windows,

²: Embedded Audio,

³: Separate WAV file

Now available for flashtransfer choice: 4k real time!



Technical changes reserved